

Name: Andrew Reader

Current post: Reader in Imaging Sciences & Biomedical Engineering

University: King's College London

Department: Biomedical Engineering
Division of Imaging Sciences and Biomedical Engineering

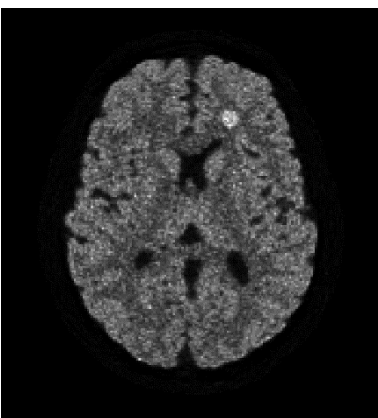
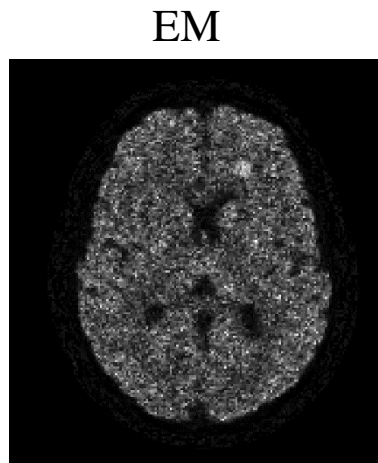
2008-2015: Associate Professor, McGill University

1999-2008: Lecturer, Senior Lecturer, University of Manchester

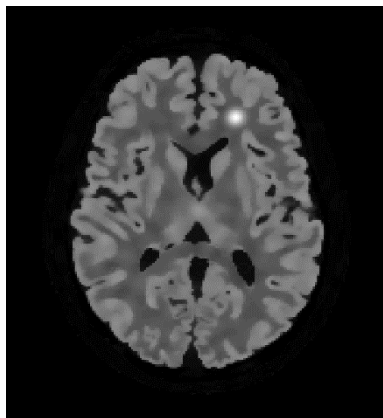
Research Interests:

- **Positron emission tomography (PET) – brain, oncology (and possibly cardiac) imaging**
- **3D/4D Image reconstruction, system modelling, data corrections (e.g. self normalization)**
- **Enhance PET with simultaneously or sequentially acquired MRI (e.g. patches / dictionaries)**
- **Joint reconstruction of simultaneous PET and MR data**
- **Direct estimation of parameters of interest from raw data (avoiding post processing, e.g. longitudinal parameter estimation)**

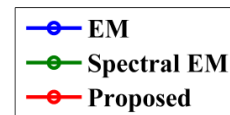
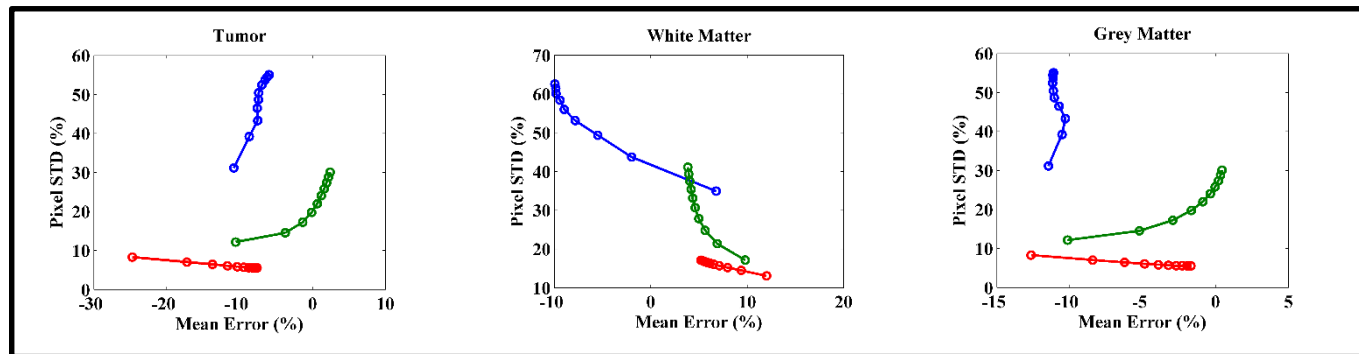
MR-spatial bases with spectral temporal bases



Spectral EM



Modified



Original

